

Xtrackers USD High Yield BB-B ex Financials ETF



BHYB: Cboe BZX Exchange, Inc.

Annual Shareholder Report — August 31, 2025

This annual shareholder report contains important information about the Xtrackers USD High Yield BB-B ex Financials ETF (the "Fund") for the period September 1, 2024 to August 31, 2025. You can find additional information about the Fund at dws.com/etfreports. You can also request this information by contacting us at (844) 851-4255.

What were the Fund costs for the last year?

(Based on a hypothetical \$10,000 investment)

Fund	Costs of a \$10,000 investment	Costs paid as a percentage of a \$10,000 investment
BHYB	\$21	0.20%

Gross expense ratio as of the latest prospectus: 0.20%. See prospectus for any contractual or voluntary waivers; without a waiver, costs would have been higher.

How did the fund perform last year and what affected its performance?

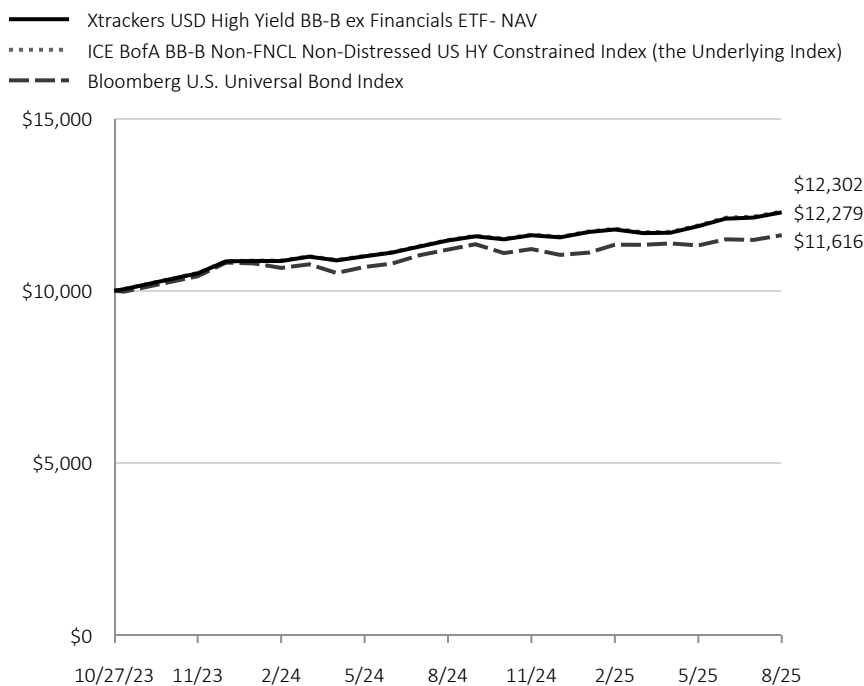
The Fund seeks investment results that correspond generally to the performance, before fees and expenses, of the ICE BofA BB-B Non-FNCL Non-Distressed US HY Constrained Index (the Underlying Index). The Underlying Index is a subset of the ICE BofA US High Yield Index which is designed to track the performance of US dollar denominated below investment grade corporate debt publicly issued in the US domestic market.

The Fund returned 7.13% for the period ended August 31, 2025. The Fund's underlying index returned 7.21% and the Fund's broad-based index the Bloomberg U.S. Universal Bond Index returned 3.72% during the same period.

All sectors contributed positively to performance during the period with the greatest contribution coming from Consumer Cyclical, Communications and Consumer Non-Cyclical.

Fund Performance

Cumulative Growth of an Assumed \$10,000 Investment



ICE BofA BB-B Non-FNCL Non-Distressed US HY Constrained Index is a subset of the ICE BofA US High Yield Index which is designed to track the performance of US dollar denominated below investment grade corporate debt publicly issued in the US domestic market.

Bloomberg U.S. Universal Bond Index measures the performance of U.S. dollar-denominated taxable bonds that are rated either investment grade or high yield. The index includes U.S. Treasury bonds, investment-grade and high yield U.S. corporate bonds, mortgage-backed securities, and Eurodollar bonds.

The Bloomberg U.S. Universal Bond Index is a required broad-based index that represents the fund's overall debt market.

Index returns do not reflect any fees or expenses and it is not possible to invest directly into an index.

Average Annual Total Returns

Fund/Index	Since Inception	
	1-Year	10/27/23
Xtrackers USD High Yield BB-B ex Financials ETF- NAV	7.13%	11.74%
ICE BofA BB-B Non-FNCL Non-Distressed US HY Constrained Index	7.21%	11.85%
Bloomberg U.S. Universal Bond Index	3.72%	8.46%

Key Fund Statistics

Net Assets (\$)	1,138,324,192
Number of Portfolio Holdings	1,460
Portfolio Turnover Rate (%)	37
Total Net Advisory Fees Paid (\$)	1,604,517
Modified duration to worst	3.1 years

Performance shown is historical. The Fund's past performance is not a good predictor or guarantee of the Fund's future performance. Investment returns and principal value of an investment will fluctuate so that an investor's shares, when redeemed, may be worth more or less than their original cost. Current performance may be lower or higher than the performance data quoted. The performance graph and returns table do not reflect the deduction of taxes that a shareholder would pay on Fund distributions or the sale of Fund shares. Shares are bought and sold at market price (closing price) not net asset value (NAV) and are not individually redeemed from the Fund. To obtain the most recent month-end performance data visit etf.dws.com/en-us/etf-products or call (844) 851-4255.

Modified duration to worst is the measure of sensitivity of the prices of bonds held by the Fund to a change in interest rates, computed using each bond's nearest call or maturity date.

What did the Fund invest in?

Credit Quality

Credit Rating	% of Net Assets
BBB	6%
BB	70%
B	24%

Sector Allocation

Sector	% of Net Assets
Consumer, Cyclical	22%
Consumer, Non-cyclical	17%
Communications	15%
Energy	13%
Industrial	12%
Basic Materials	7%
Financial	5%
Technology	4%
Utilities	4%
Diversified	0%

Geographical Diversification

Country	% of Net Assets
United States	83%
Canada	5%
United Kingdom	2%
Japan	2%
Other	5%

The quality ratings represent the highest of Moody's Investor Services, Inc. ("Moody's"), S&P Global Ratings (S&P) or Fitch Ratings Inc. (Fitch) credit ratings. The ratings of Moody's, S&P and Fitch represent their opinions as to the quality of the securities they rate. Credit quality measures a bond issuer's ability to repay interest and principal in a timely manner and is measured on a scale that ranges from AAA (highest) to D (lowest). Ratings are relative and subjective and are not absolute standards of quality. Credit quality does not remove market risk and is subject to change.

Holdings-based data is subject to change.

Additional Information

If you wish to view additional information about the Fund, including, but not limited to, its prospectus, quarterly holdings, and financial statements and other information, please visit dws.com/etfreports. For information about the Fund's proxy voting policies and procedures and how the Fund voted proxies related to its portfolio securities, please visit dws.com/en-us/resources/proxy-voting. This additional information is also available free of charge by contacting us at (844) 851-4255.

Householding

Householding is an option available to certain fund investors. Householding is a method of delivery, based on the preference of the individual investor, in which a single copy of certain shareholder documents can be delivered to investors who share the same address, even if their accounts are registered under different names. Please contact your broker-dealer if you are interested in enrolling in householding and receiving a single copy of prospectuses and other shareholder documents, or if you are currently enrolled in householding and wish to change your householding status.

Investing involves risk, including the possible loss of principal. Bond investments are subject to interest rate, credit, liquidity, and market risks to varying degrees. When interest rates rise, bond prices generally fall. Credit risk refers to the ability of an issuer to make timely payments of principal and interest. This Fund is non-diversified and can take larger positions in fewer issues, increasing its potential risk. An investment in the Fund should be considered only as a supplement to a complete investment program for those investors willing to accept the risks associated with the Fund. Please read the prospectus for more information.

This report must be preceded or accompanied by a prospectus. We advise you to consider the Fund's investment objectives, risk factors, and charges and expenses carefully before investing. The prospectus contains this and other important information about the Fund, which can be requested by calling (844) 851-4255, or visit dws.com/etfreports to view or download a prospectus. Please read the prospectus carefully before you invest.

ICE Data Indices, LLC, is used with permission. "ICE[®]" is a trade mark of ICE Data Indices, LLC or its affiliates and BofA[®] is a registered trademark of Bank of America Corporation licensed by Bank of America Corporation and its affiliates ("BofA") and may not be used without BofA's prior written approval. These trademarks have been licensed, along with the ICE BofA BB-B Non-FNCL Non-Distressed US HY Constrained Index ("Index") for use by DBX Advisors LLC ("Advisor") in connection with Xtrackers USD High Yield BB-B ex Financials ETF (the "Product"). Neither Advisor, DBX ETF Trust (the "Trust") nor the Product, as applicable, is sponsored, endorsed, sold or promoted by ICE Data Indices, LLC, its affiliates or its Third Party Suppliers ("ICE Data and its Suppliers"). ICE Data and its Suppliers make no representations or warranties regarding the advisability of investing in securities generally, in the Product particularly, the Trust or the ability of the Index to track general market performance. Past performance of an Index is not an indicator of or a guarantee of future results. ICE DATA AND ITS SUPPLIERS DISCLAIM ANY AND ALL WARRANTIES AND REPRESENTATIONS, EXPRESS AND/OR IMPLIED, INCLUDING ANY WARRANTIES OF MERCHANTABILITY OR FITNESS FOR A PARTICULAR PURPOSE OR USE, INCLUDING THE INDICES, INDEX DATA AND ANY INFORMATION INCLUDED IN, RELATED TO, OR DERIVED THEREFROM ("INDEX DATA"). ICE DATA AND ITS SUPPLIERS SHALL NOT BE SUBJECT TO ANY DAMAGES OR LIABILITY WITH RESPECT TO THE ADEQUACY, ACCURACY, TIMELINESS OR COMPLETENESS OF THE INDICES AND THE INDEX DATA, WHICH ARE PROVIDED ON AN "AS IS" BASIS AND YOUR USE IS AT YOUR OWN RISK.

DBX ETF Trust Funds are distributed by ALPS Distributors, Inc. ("ALPS"). The Funds are managed by DBX Advisors LLC which is not affiliated with ALPS.

The brand DWS represents DWS Group GmbH & Co. KGaA and any of its subsidiaries such as DWS Distributors, Inc., which offers investment products, or DWS Investment Management Americas, Inc. and RREEF America L.L.C., which offer advisory services.

© 2025 DWS Group. All rights reserved. Xtrackers™ is a trademark of DWS Investment GmbH. All other trademarks, servicemarks or registered trademarks are the property of their respective owners.